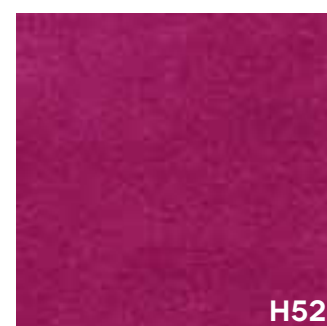
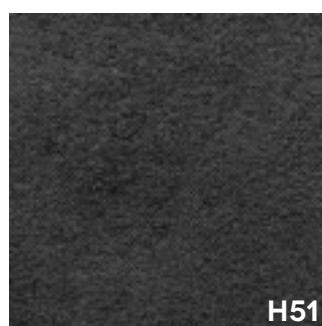
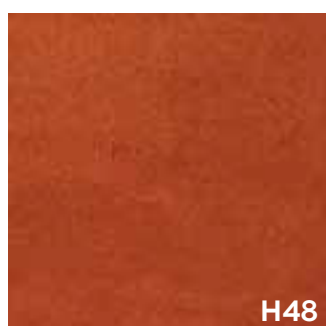
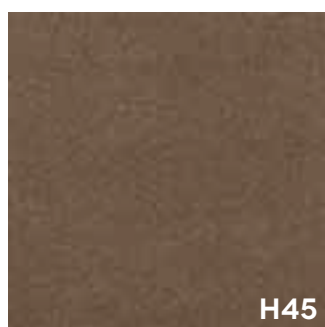
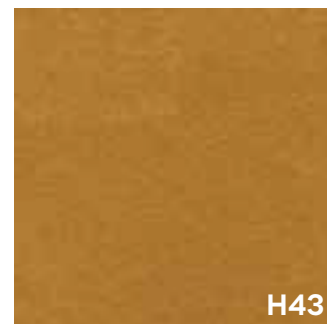


**CAT. A VELOUR NON-FEU
FIRE RETARDANT VELVET**



**CAT. A VELOUR NON-FEU
FIRE RETARDANT VELVET**

COMPOSITION

100% TREVIRA CS

100% TREVIRA CS

DETAILS

	MÉTHODE / TEST METHOD	VALEUR / LIMIT VALUE
Résistance à l'abrasion Abrasion resistance	UNI EN ISO 12947	100.000 cycles Martindale

**ENTRETIEN
CLEANING**

Aspirer régulièrement ou nettoyage à sec.

Vacuum regularly or professional dry clean.